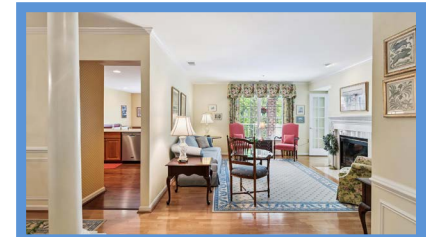
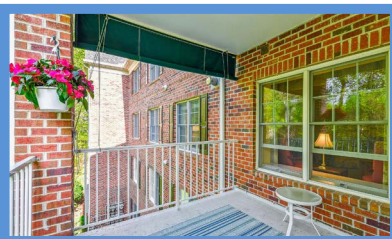


*Hubble  
Bisbee*

CHRISTIE'S  
INTERNATIONAL REAL ESTATE



12030 TRALEE ROAD, UNIT 304  
TRALEE FOREST

LOCATIONS

2330 W Joppa Road, Suite 104  
Lutherville, MD 21093

181 Harry S Truman Pkwy Ste 200  
Annapolis, MD 21401



LYNN PLACK

Realtor®  
Lynn.C.Plack@gmail.com  
410-340-2939 (Mobile)  
410-321-1411 (Office)



WWW.HUBBLEBISBEE.COM



### FOYER

- Paneled entry door
- Hardwood flooring
- Knee-wall with column at Dining Room
- Crown molding
- Closet
- Brass/beveled glass ceiling light
- Flows to Living Room

### LIVING ROOM 17' X 14'

- Hardwood flooring
- Gas fireplace with colonial mantel, marble surround and hearth
- Built-in bookcase with base cabinet
- Double window with drapery treatment
- Crown molding
- Recessed light
- Access to Den/Bedroom 3
- Flows to Hall
- Flows to Dining Room



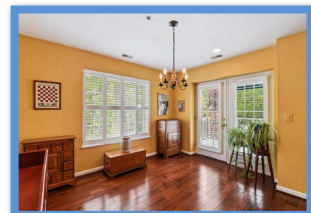
### DINING ROOM 12' X 11'

- Hardwood flooring
- Crown molding
- Chair rail with wainscot moldings
- Brass 8-light chandelier
- Access to Kitchen



### KITCHEN 22' X 11'

- Hardwood flooring
- Raised-panel wood cabinets including base cabinets, wall cabinets, peninsula and lazy-Susan base cabinet
- Corian counters with seamless double sink with stainless steel bases and Insinkerator disposal
- Maytag stainless steel French door refrigerator with water-ice dispenser
- GE stainless steel 5-burner gas range with griddle



### HALL

- Hardwood flooring
- Double linen closet
- Recessed lighting
- Crown molding
- Access to Primary Bedroom, Bedroom 2, Hall Bath and Laundry/Utility Room

### PRIMARY BEDROOM 17' X 13'

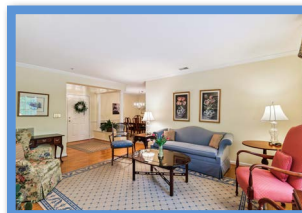
- Wall-to-wall carpeting
- Double window with plantation shutters and drapery treatment
- Crown molding
- Walk-in closet

### PRIMARY BATH

- Ceramic tile floor
- Vanity with solid surface top and seamless sink, plate glass mirror, overhead lighting and mirrored medicine cabinet
- Glass enclosed ceramic tiled shower stall with recessed light
- Gerber flush
- Exhaust fan

### BEDROOM 2 11' X 10'

- Wall-to-wall carpeting
- Double window with plantation shutters
- Crown molding
- Closet



### DEN/BEDROOM 3 11' X 9'

- French doors from Living Room
- Wall-to-wall carpeting
- Double window with plantation blind
- Shelved closet
- Upper display shelving along 3 walls
- Recessed light

### HALL BATH

- Ceramic tile floor and tub surround
- Vanity with solid surface top and seamless sink, plate glass mirror, overhead lighting and mirrored medicine cabinet
- Tub/shower combination
- Gerber flush
- Linen closet
- Exhaust fan

### LAUNDRY/UTILITY ROOM

- Vinyl flooring
- Carrier HVAC unit with gas heat
- State electric water heater
- Maytag washer and dryer
- Electric service panel
- Storage cabinet
- Wall mount shelving
- Whirlpool refrigerator
- Ceiling light

### DECK

- Concrete deck
- Metal railings
- Access from Kitchen
- Backs to trees

*All information contained herein deemed reliable but not guaranteed by the Broker*

